

TYPE: T-1/3A240

Specifications

Nominal Dimension : (with sleeve)	$\Phi = 16.8 \pm 0.2 \text{mm}$ $H = 16.5 \pm 0.5 \text{mm}$
Applications :	Recommended discharge current 24mA to 240 mA
Nominal Voltage :	1.2V
Nominal Capacity* :	240mAh when discharge at 48mA(0.2C) to 1.0V at 20°C
Standard Charge :	24mA(0.1C) for 15 hrs at 20°C
Fast Charge :	120mA (0.5C) with charge termination control Recommended control parameters
Service Life :	> 500 cycles
Continuous Overcharge :	24mA maximum permissible current No conspicuous deformation and / or leakage
Weight** :	10g
Internal Resistance** :	Max 35m Ω at 1000Hz measured within 1 hour after standard charge
Max. Charging Voltage :	1.5V at 48mA(0.2C) charging
Ambient Temperature :	Standard Charge : 0°C to 45°C Fast Charge : 10°C to 45°C Discharge : -20°C to 45°C Storage : -20°C to 45°C

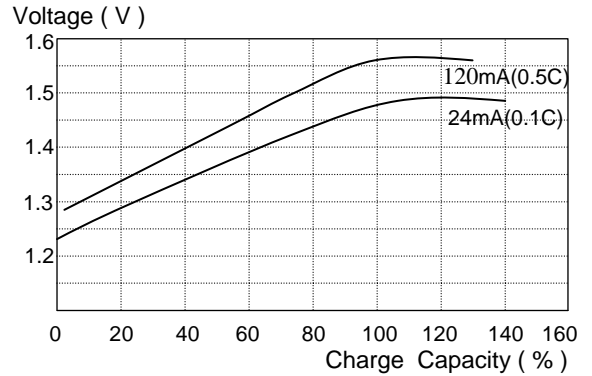
Note:

*0.2C discharge capacity after charging at 0.1C for 15 hours.

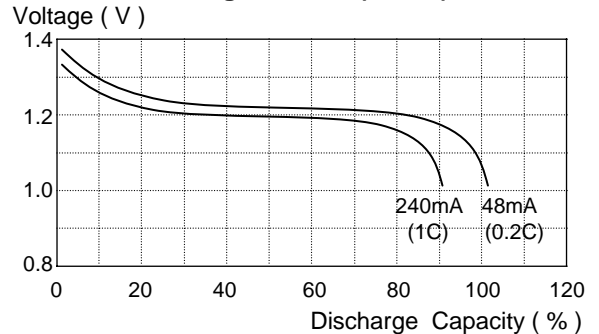
**Weight and internal impedance are for reference.

Characteristics

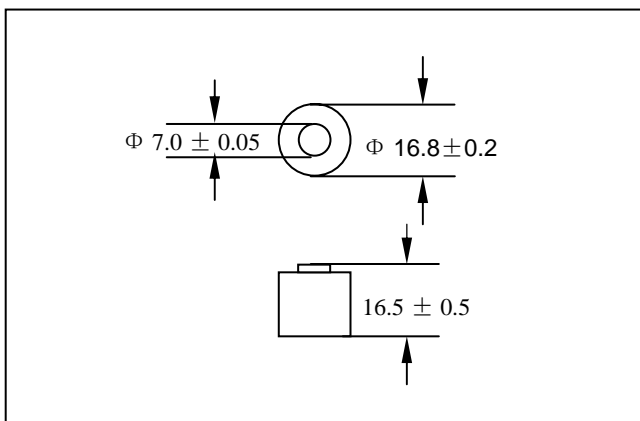
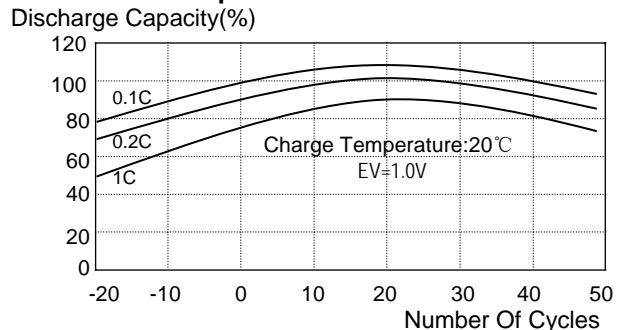
Charge Curves (20°C)



Discharge Curves (20°C)



Temperature Characteristic



American Toppower

Add: 2033 Route 130, Unit N, Monmouth Junction, NJ 08852

Manufacturer reserves the right to alter or amend the design, model and specification without prior notice.